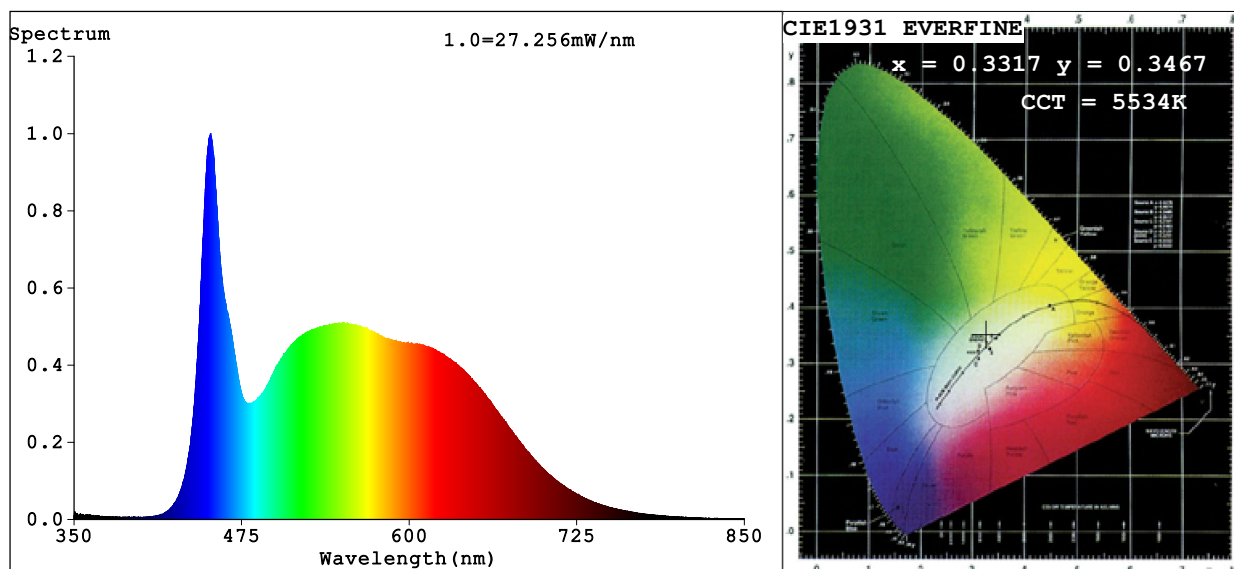


Spectrum Test Report



Color Parameters:

Chromaticity Coordinate: $x=0.3317$ $y=0.3467$ $u'=0.2042$ $v'=0.4803$

CCT=5534K (Duv=0.0032) Dominant WL:Ld =548.0nm Purity=3.6%

Ratio:R=16.0% G=78.4% B=5.6%; Peak WL:Lp=451.9nm FWHM=23.3nm

Render Index:Ra=91.9 CRI=88.1 TM30:Rf=89 Rg=99

R1 =92 R2 =94 R3 =94 R4 =92 R5 =91 R6 =90 R7 =95

R8 =87 R9 =64 R10=85 R11=91 R12=67 R13=93 R14=97 R15=90

Photo Parameters:

Flux = 927.2 lm Eff. : 49.83 lm/W Fe = 3.216 W

Electrical parameters:

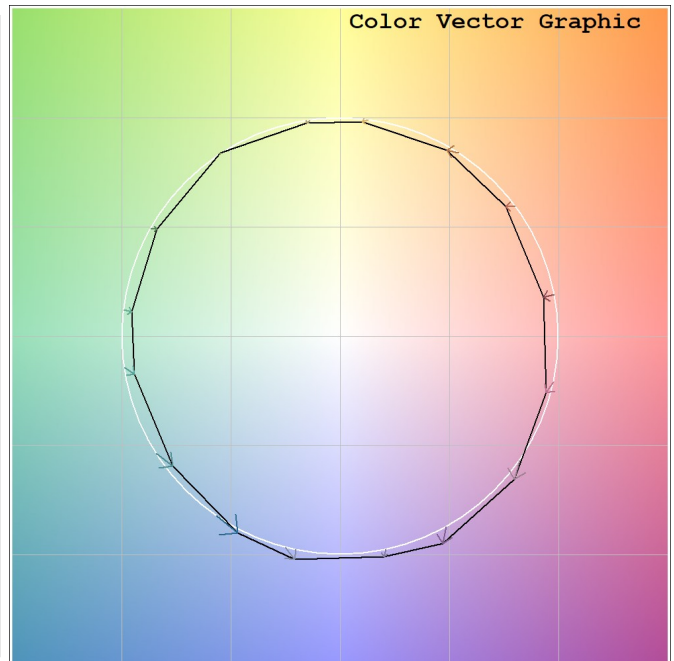
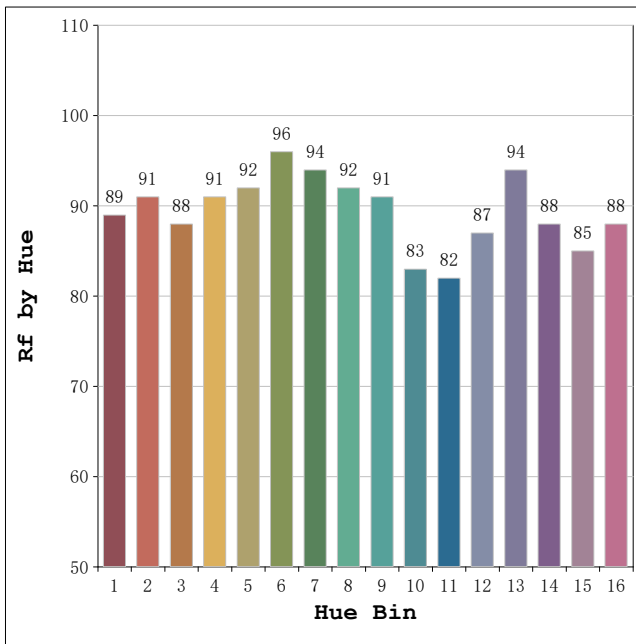
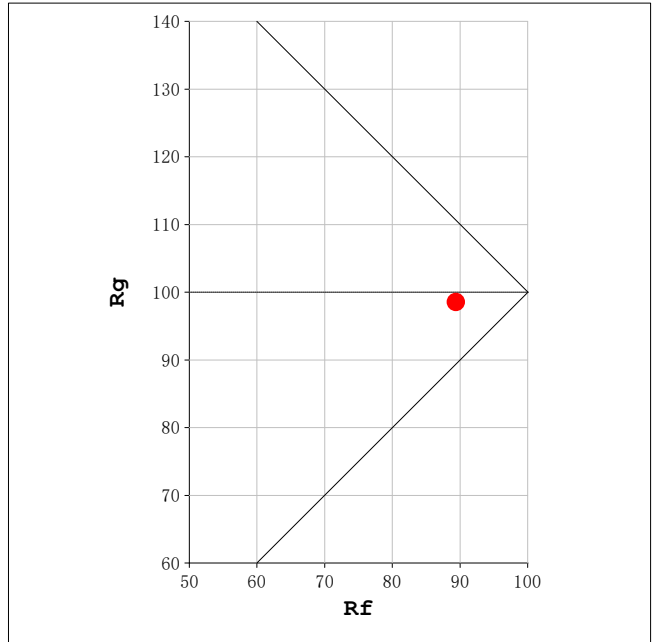
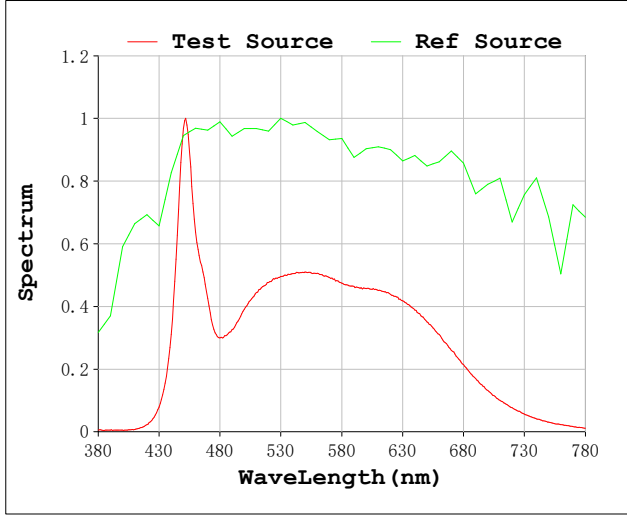
V = 230.06 V I = 0.09016 A P = 18.61 W PF = 0.8971

Status: Integral T = 1562 ms Ip = 49490 (76%)

Model:Spotia Zomm CTT Negro
 Tester:Sergio Carneros
 Temperature:20Deg
 Manufacturer:Luz Negra

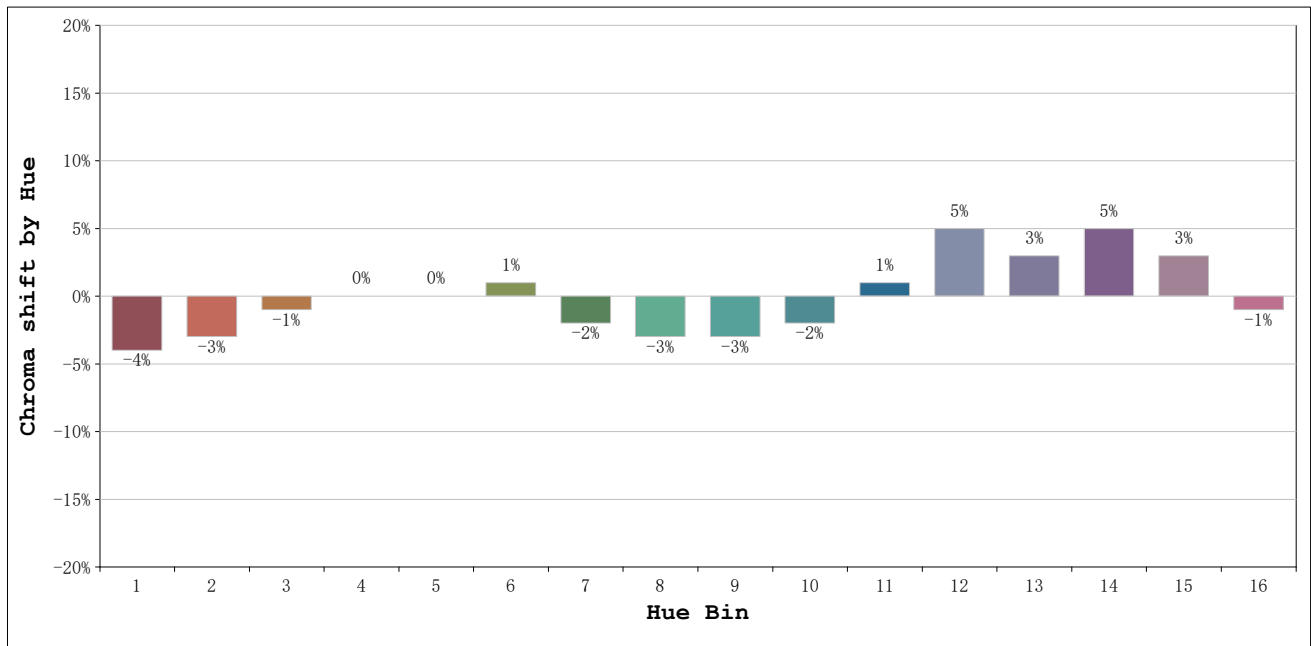
Number:6000k 20° Panal de abeja
 Date:2026-03-23 09:06:13
 Humidity:50%
 Remarks:1 unidad

Rf: 89 **CCT: 5534 K** **u': 0.2042**
Rg: 99 **Duv: 0.0032** **v': 0.4803**



Model:Spotia Zomm CTT Negro
 Tester:Sergio Carneros
 Temperature:20Deg
 Manufacturer:Luz Negra

Number:6000k 20° Panal de abeja
 Date:2026-03-23 09:06:13
 Humidity:50%
 Remarks:1 unidad

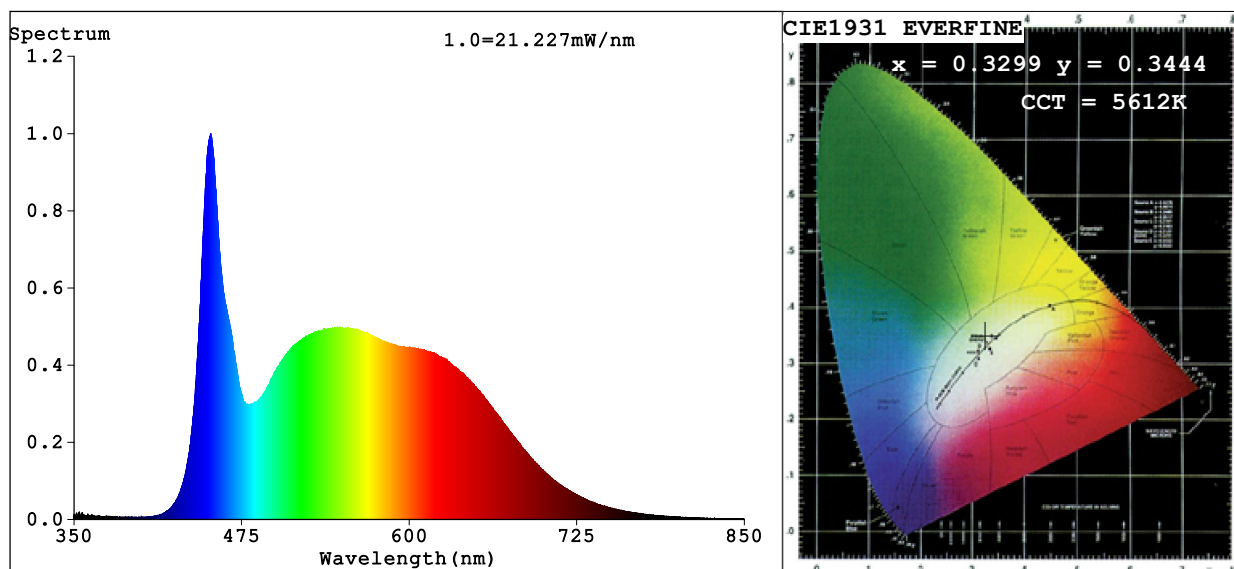


			Graphic shift(%)	
Hue Bin	Hue Angle	Rf	Chroma	Hue
1	0.0° - 22.5°	89	-4	0
2	22.5° - 45.0°	91	-3	2
3	45.0° - 67.5°	88	-1	5
4	67.5° - 90.0°	91	0	3
5	90.0° - 112.5°	92	0	2
6	112.5° - 135.0°	96	1	0
7	135.0° - 157.5°	94	-2	0
8	157.5° - 180.0°	92	-3	0
9	180.0° - 202.5°	91	-3	4
10	202.5° - 225.0°	83	-2	9
11	225.0° - 247.5°	82	1	12
12	247.5° - 270.0°	87	5	5
13	270.0° - 292.5°	94	3	-1
14	292.5° - 315.0°	88	5	-5
15	315.0° - 337.5°	85	3	-7
16	337.5° - 360.0°	88	-1	-4

Model:Spotia Zomm CTT Negro
 Tester:Sergio Carneros
 Temperature:20Deg
 Manufacturer:Luz Negra

Number:6000k 20° Panal de abeja
 Date:2026-03-23 09:06:13
 Humidity:50%
 Remarks:1 unidad

Spectrum Test Report



Color Parameters:

Chromaticity Coordinate: $x=0.3299$ $y=0.3444$ $u'=0.2038$ $v'=0.4789$

CCT=5612K (Duv=0.0029) Dominant WL:Ld =535.0nm Purity=2.5%

Ratio:R=15.9% G=78.4% B=5.7%; Peak WL:Lp=451.9nm FWHM=23.2nm

Render Index:Ra=92.1 CRI=88.3 TM30:Rf=89 Rg=99

R1 =92 R2 =95 R3 =94 R4 =92 R5 =91 R6 =90 R7 =95

R8 =88 R9 =66 R10=86 R11=91 R12=67 R13=93 R14=97 R15=91

Photo Parameters:

Flux = 707.0 lm Eff. : 38.04 lm/W Fe = 2.459 W

Electrical parameters:

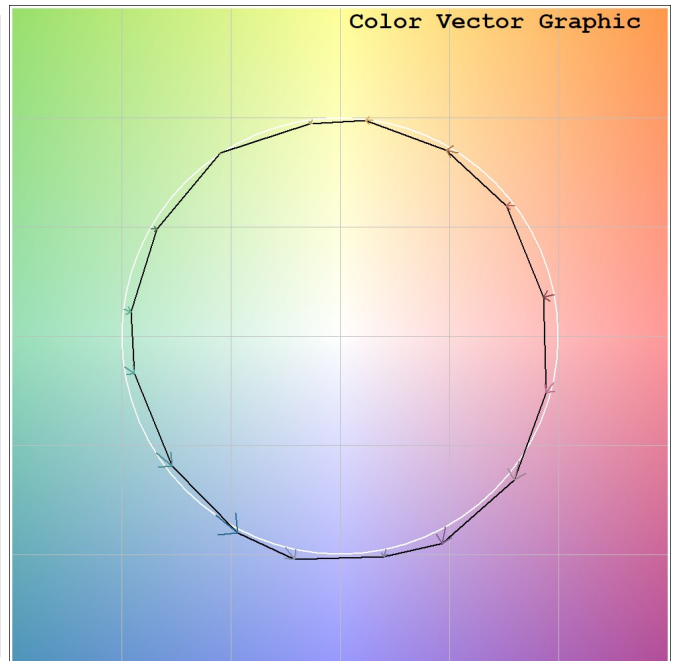
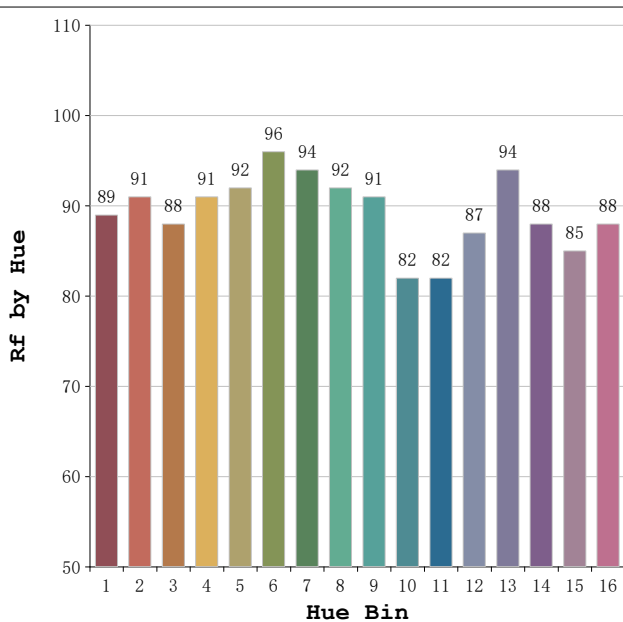
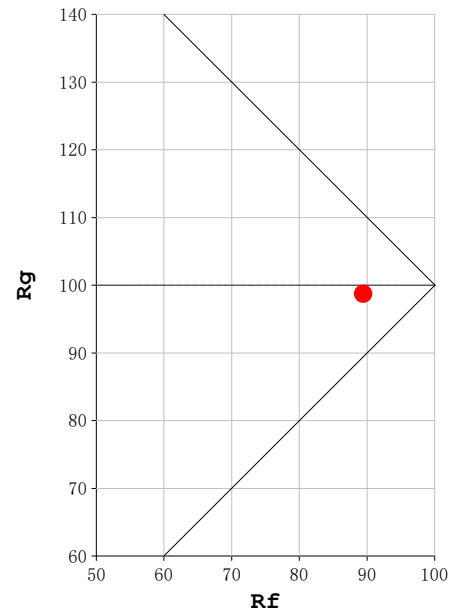
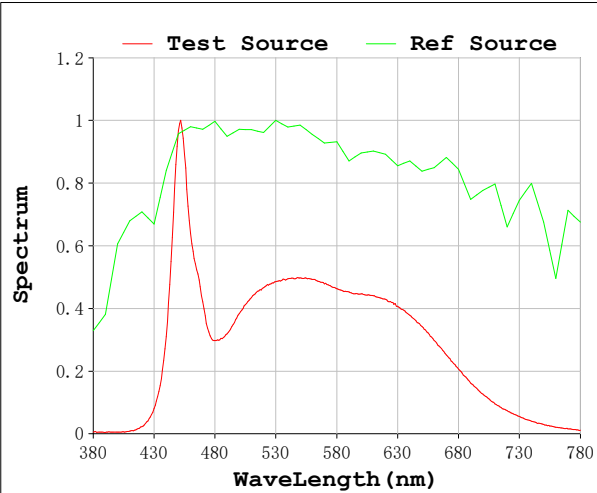
V = 230.05 V I = 0.09006 A P = 18.59 W PF = 0.8970

Status: Integral T = 1562 ms Ip = 38677 (59%)

Model:Spotia Zomm CTT Negro
 Tester:Sergio Carneros
 Temperature:20Deg
 Manufacturer:Luz Negra

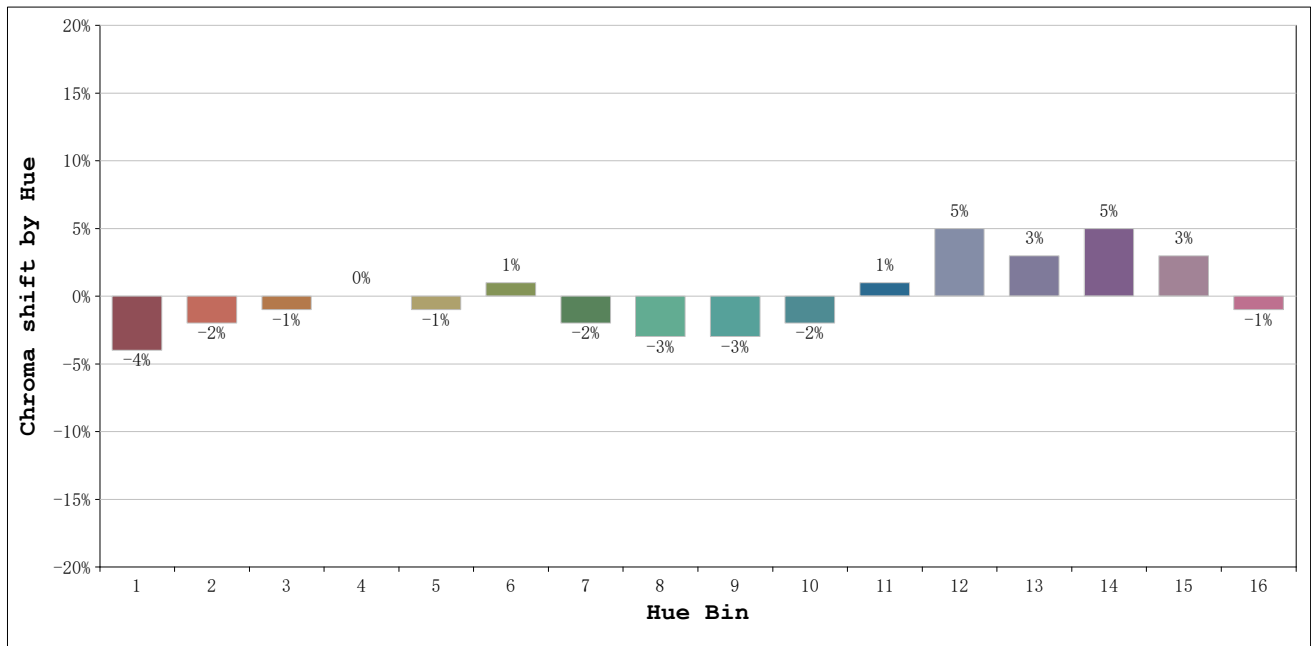
Number:6000k 60° Panal de abeja
 Date:2026-03-23 09:07:01
 Humidity:50%
 Remarks:1 unidad

Rf: 89 **CCT: 5612 K** **u': 0.2038**
Rg: 99 **Duv: 0.0029** **v': 0.4789**



Model:Spotia Zomm CTT Negro
 Tester:Sergio Carneros
 Temperature:20Deg
 Manufacturer:Luz Negra

Number:6000k 60° Panal de abeja
 Date:2026-03-23 09:07:01
 Humidity:50%
 Remarks:1 unidad



			Graphic shift(%)	
Hue Bin	Hue Angle	Rf	Chroma	Hue
1	0.0° - 22.5°	89	-4	0
2	22.5° - 45.0°	91	-2	2
3	45.0° - 67.5°	88	-1	5
4	67.5° - 90.0°	91	0	4
5	90.0° - 112.5°	92	-1	2
6	112.5° - 135.0°	96	1	0
7	135.0° - 157.5°	94	-2	0
8	157.5° - 180.0°	92	-3	0
9	180.0° - 202.5°	91	-3	4
10	202.5° - 225.0°	82	-2	9
11	225.0° - 247.5°	82	1	13
12	247.5° - 270.0°	87	5	5
13	270.0° - 292.5°	94	3	0
14	292.5° - 315.0°	88	5	-4
15	315.0° - 337.5°	85	3	-7
16	337.5° - 360.0°	88	-1	-4

Model:Spotia Zomm CTT Negro
 Tester:Sergio Carneros
 Temperature:20Deg
 Manufacturer:Luz Negra

Number:6000k 60° Panal de abeja
 Date:2026-03-23 09:07:01
 Humidity:50%
 Remarks:1 unidad